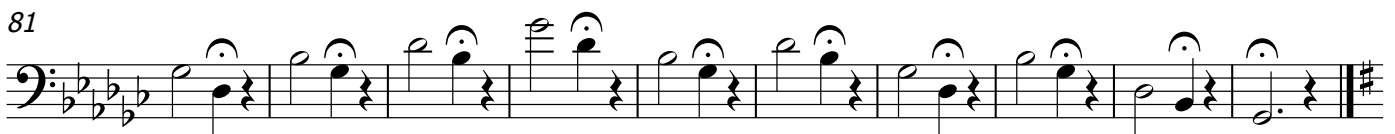
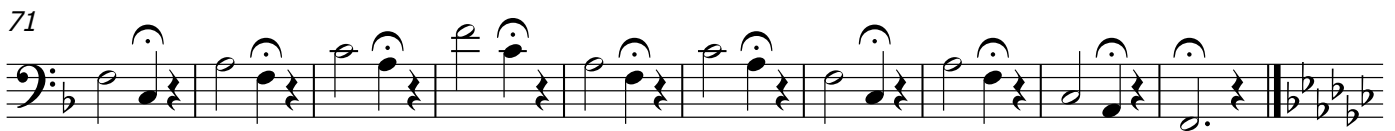
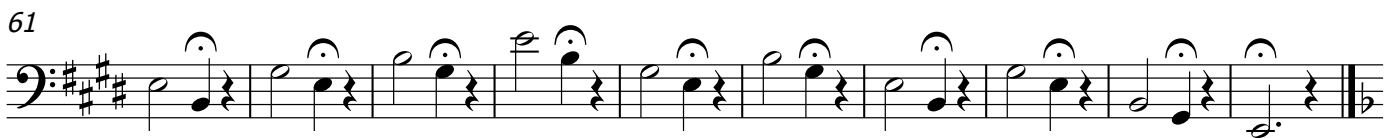
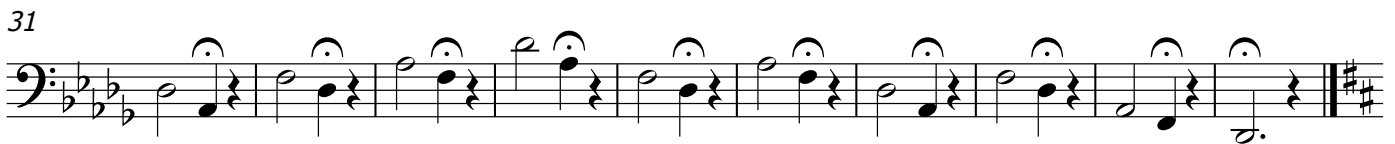
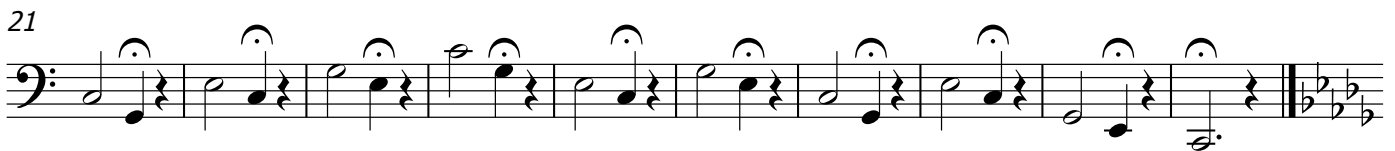
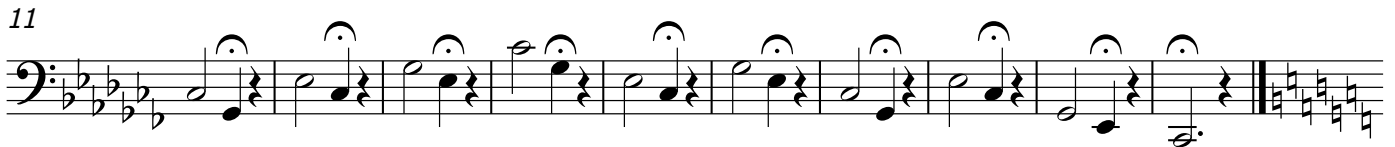
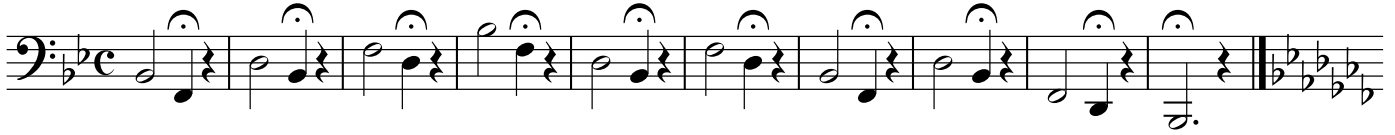


# Trombone

## Tone, Range, and Attack Builder

Pottag  
Edited by John Sizemore



# Trombone

2

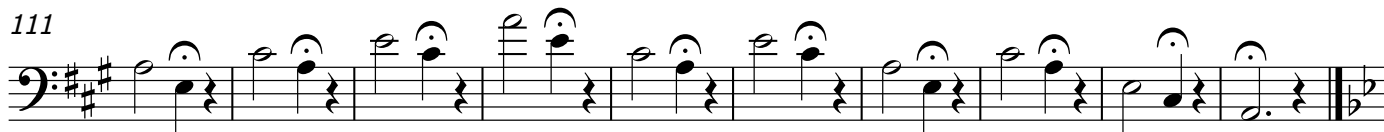
91



101



111



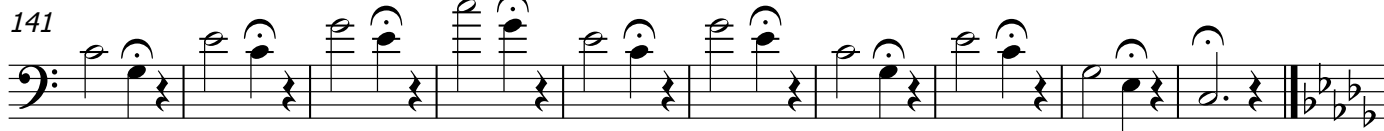
121



131



141



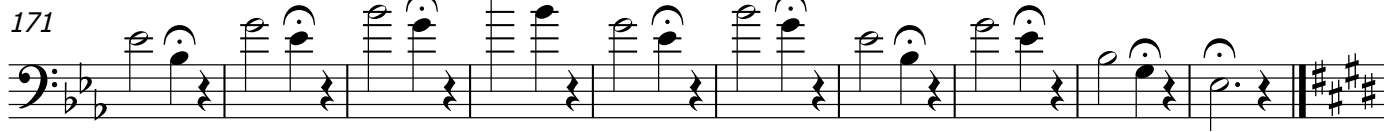
151



161



171



181



# Trombone

191 3

The image shows a single staff of music in bass clef with a key signature of one flat (B-flat). The music consists of ten measures. Each measure contains a half note followed by a quarter rest. The notes are: G2 (first measure), F2 (second), E2 (third), D2 (fourth), C2 (fifth), B1 (sixth), A1 (seventh), G1 (eighth), F1 (ninth), and E1 (tenth). The notes are written with stems pointing up and have a fermata above them. The staff ends with a double bar line.